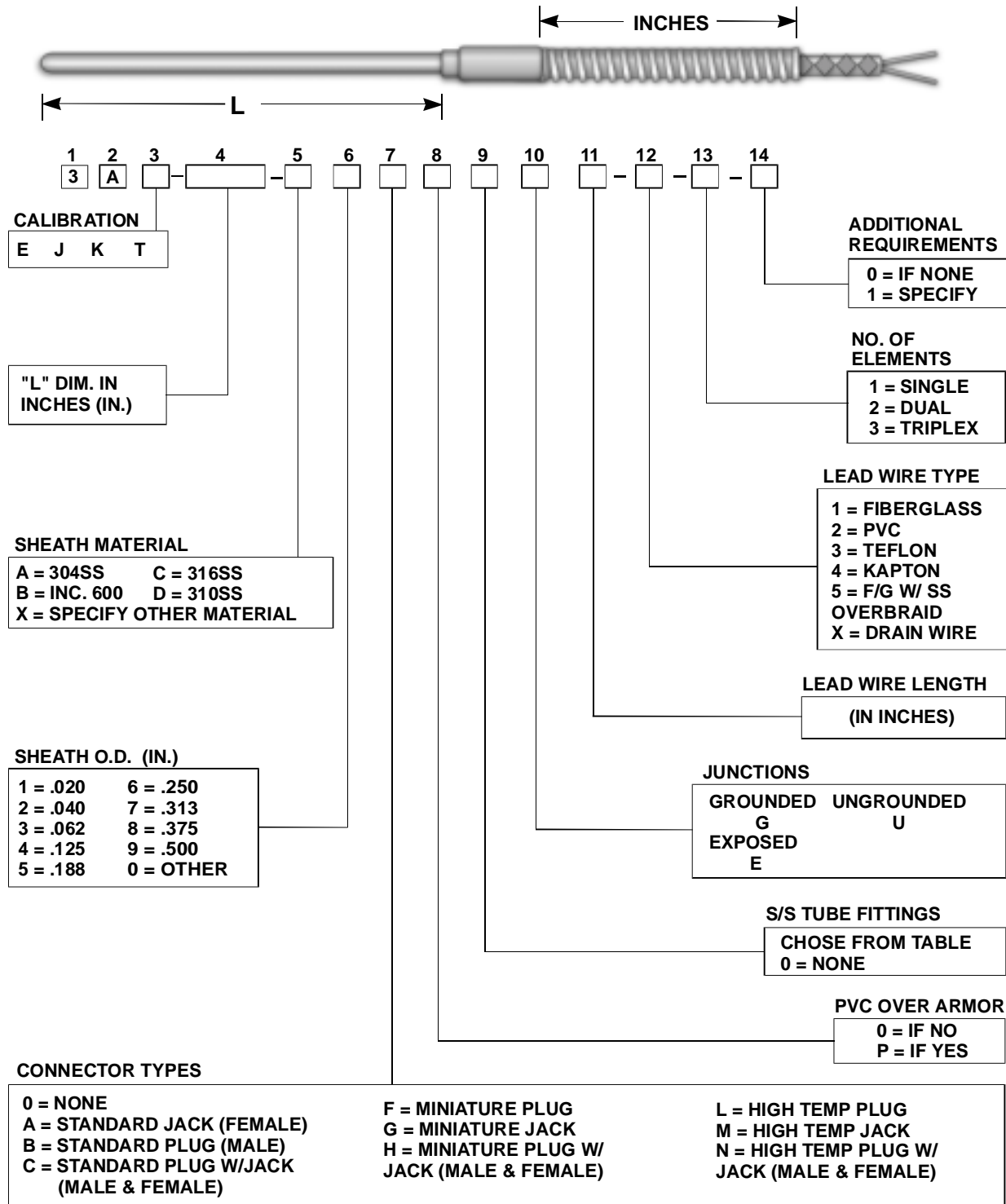


# STI MANUFACTURING, INC.

## STYLE 3A

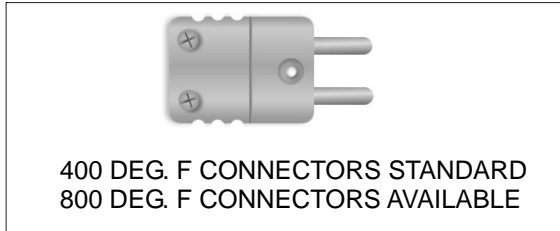
SHEATH TYPE THERMOCOUPLE WITH FLEXIBLE SS ARMOR AND INSULATED LEAD WIRE  
20 ga. STANDARD, OTHER GAUGES AVAILABLE



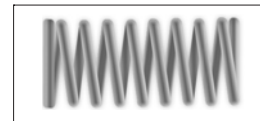
# STI MANUFACTURING, INC.

## STYLE 3A OPTIONS

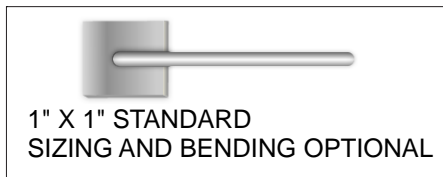
### QUICK DISCONNECT CONNECTORS



### SPRING LOADING

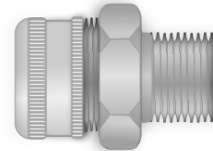


### WELD PADS

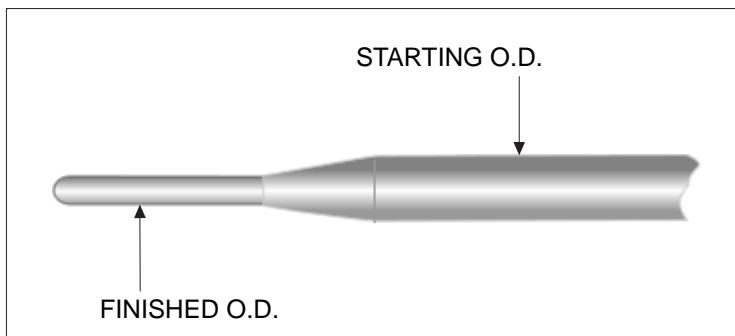


### CORD GRIPS

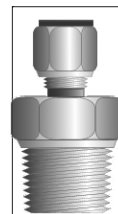
1/2" NPT  
3/4" NPT  
OTHER SIZES ARE  
AVAILABLE



### REDUCED TIPS



TUBE TO PIPE FITTINGS  
STAINLESS STEEL STANDARD  
OTHER MATERIALS AVAILABLE



TC O.D. X NPT	
1/8"	1/8" = 2
3/16"	1/4" = 3
1/4"	1/4" = 4
1/4"	1/2" = 6
3/8"	1/2" = 7
1/2"	1/2" = 8
IF VENTED = X	